

## OFFICE PREMISES

## FOR LEASE

200 Catherine Street Ottawa

### Highlights:

- Ground-Floor, Unit 100 :  
Approx. 5,828 RSF
- Second Floor:  
Approx. ~~6,612~~ RSF  
Approx. 3,306 RSF left to be leased
- Fourth Floor, Unit 401:  
Approx. 2,700 RSF
- Asking Net Rent: \$15.00/RSF  
With Inducement Package
- Additional Rent: \$16.53/RSF (2022)
- Plenty of Parking
- Adjacent & Easy Access to  
Highway 417
- Fully Upgraded HVAC Systems
- Easy Access to Downtown Core
- Corporate Boardroom Available  
On a daily basis
- Popular Amenities nearby

For all inquiries please contact :  
(Brokers Protected)

Denis Shank, Broker of Record  
1 (613) 601-1353  
[dshank@capworthrealty.com](mailto:dshank@capworthrealty.com)

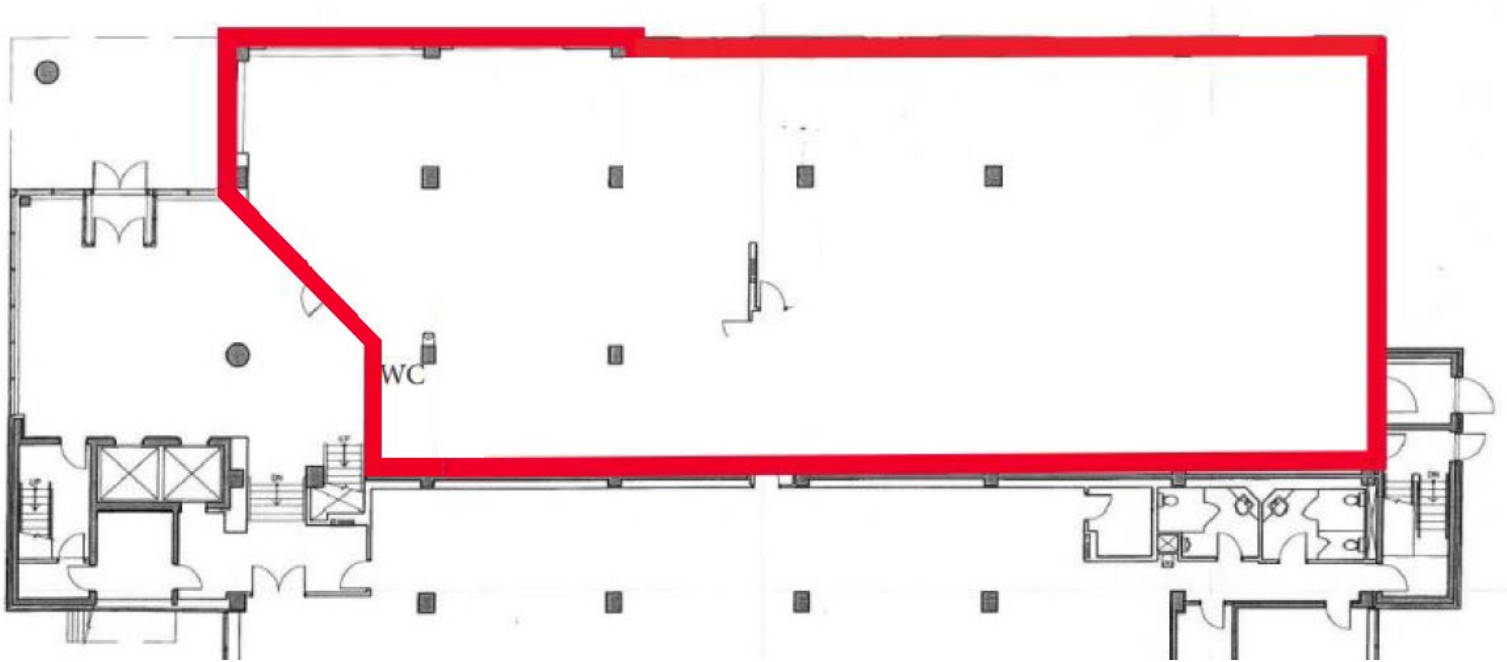


# COMMON AREAS



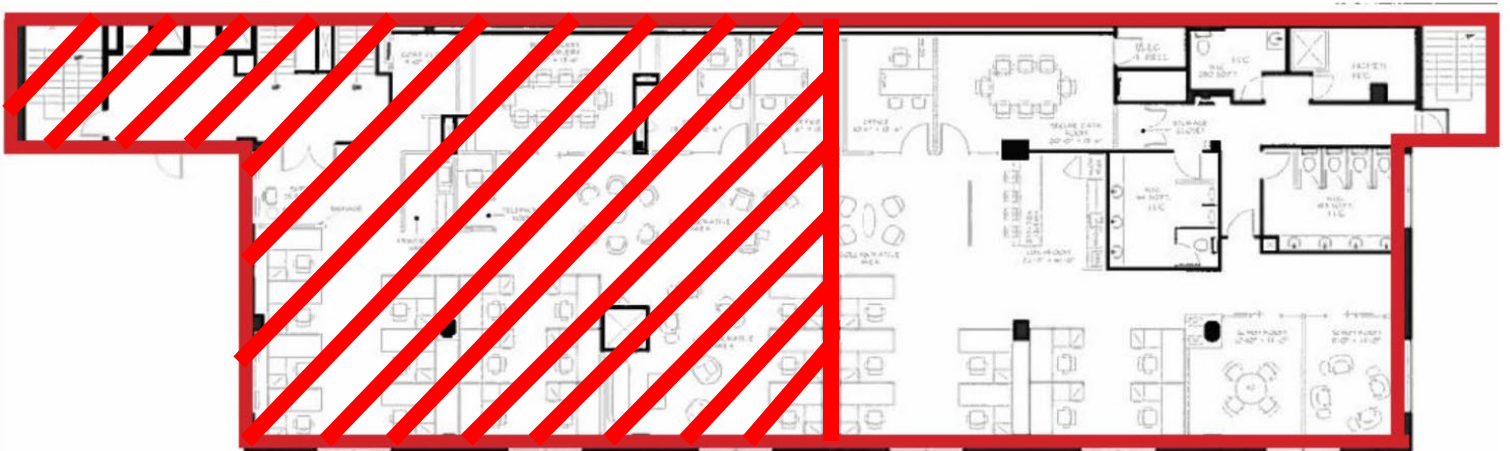
# 1<sup>st</sup> Floor

Approx. 5,828 SF



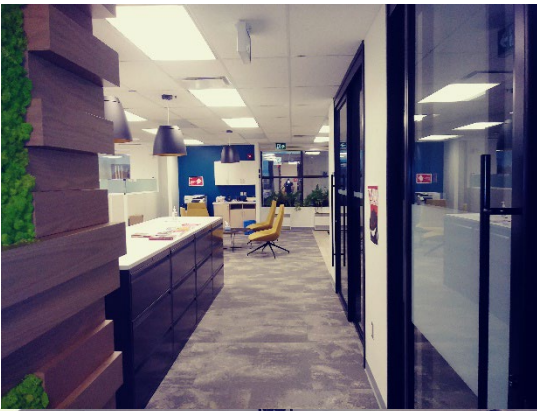
# 2<sup>nd</sup> Floor

Approx. 3,306 SF



# 4<sup>th</sup> Floor

Approx. 2,769 SF



For all inquiries please contact **Denis Shank, Broker of Record** | 1 (613) 601-1353 | [dshank@capworthrealty.com](mailto:dshank@capworthrealty.com)

This document has been prepared by Capworth Commercial Realty Brokerage Corporation for the purpose of advertising and general information only. In regards to the information found within this document, Capworth Commercial Realty Brokerage Corporation makes no guarantees, representations or warranties of any kind, expressed or implied, regarding its accuracy and reliability. Any interested party should conduct a careful, independent investigation of the property to determine the suitability of the property for their specific needs.