



OFFICE SPACE

FOR LEASE

15 Grenfell Crescent, Suite 202A, 204 & 206 Ottawa, ON. K2G 0G3

BUILDING FEATURES

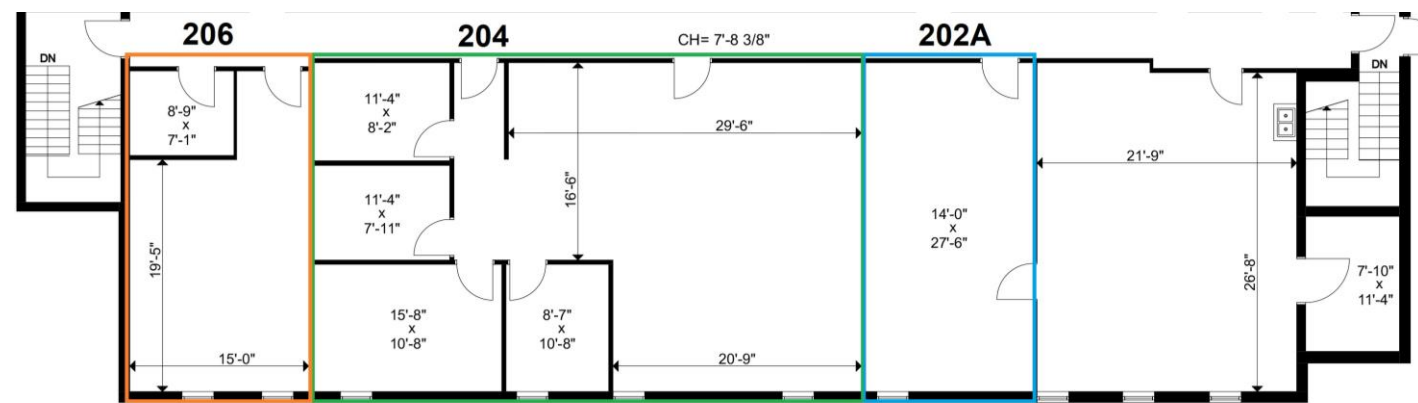
- ❖ Suite 202A – 425 sq. ft. wide open space
- ❖ Suite 204 – 1,385 sq. ft.
 - ❖ Has 4 private offices, and a wide open work area
- ❖ Suite 206 – 406 sq. ft. wide open space

LEASE DETAILS

ADDRESS	15 Grenfell Crescent Ottawa, Suite 202A, 204 & 206 ON. K2G 0G3
TOTAL SPACE	~ 2,216 sq. ft.
LEASE TERM	3 to 5 Years
ZONING CODE	IP[178]
OCCUPANCY	Immediate



Suite Number	Net Rent per Month	Suite Number	Recoverable Cost per Month
202A	\$450.00 per month	202A	\$400.00 per month
204	\$1,440.00 per month	204	\$1,270.00 per month
206	\$425.00 per month	206	\$375.00 per month



GEOFFREY H. GODDING CPM

Senior VP / Commercial Sales Representative

Capworth Commercial Realty Brokerage Corporation

Direct # 613.720.1186

Main Office # 613.663-2549 ext. 4

Email: geoffg@bell.net

Main Office:

1390 Prince of Wales Drive,
Suite 106, Ottawa, Ontario K2C 3N6

ADDITIONAL RENT INCLUDES:

- General Maintenance & Repair
- Management & Administration
- HVAC maintain & Repair
- Real Estate Taxes
- Water & Sewer
- Snow Removal
- Insurance
- Landscape
- Hydro
- Gas

Recoverable cost are estimated at \$11.00 per sq. ft. for year ending December 31, 2025

This communication is intended for general information only and not to be relied upon in any way. Consequently, no responsibility or liability whatsoever can be accepted by CAPWORTH for any loss or damage resulting from any use of, reliance on or reference to the contents of this document, including hypertext links to external sources. In addition, as a general communication, this material does not necessarily represent the view of CAPWORTH in relation to particular properties or projects. This communication is not intended to cause or induce breach of any agency agreement. Reproduction or distribution of this communication in whole or in part is not allowed without prior written approval of CAPWORTH.