

CAPWORTH

COMMERCIAL REALTY BROKERAGE CORPORATION
COURTIER EN IMMOBILIER COMMERCIAL

OFFICE PREMISES

FOR LEASE

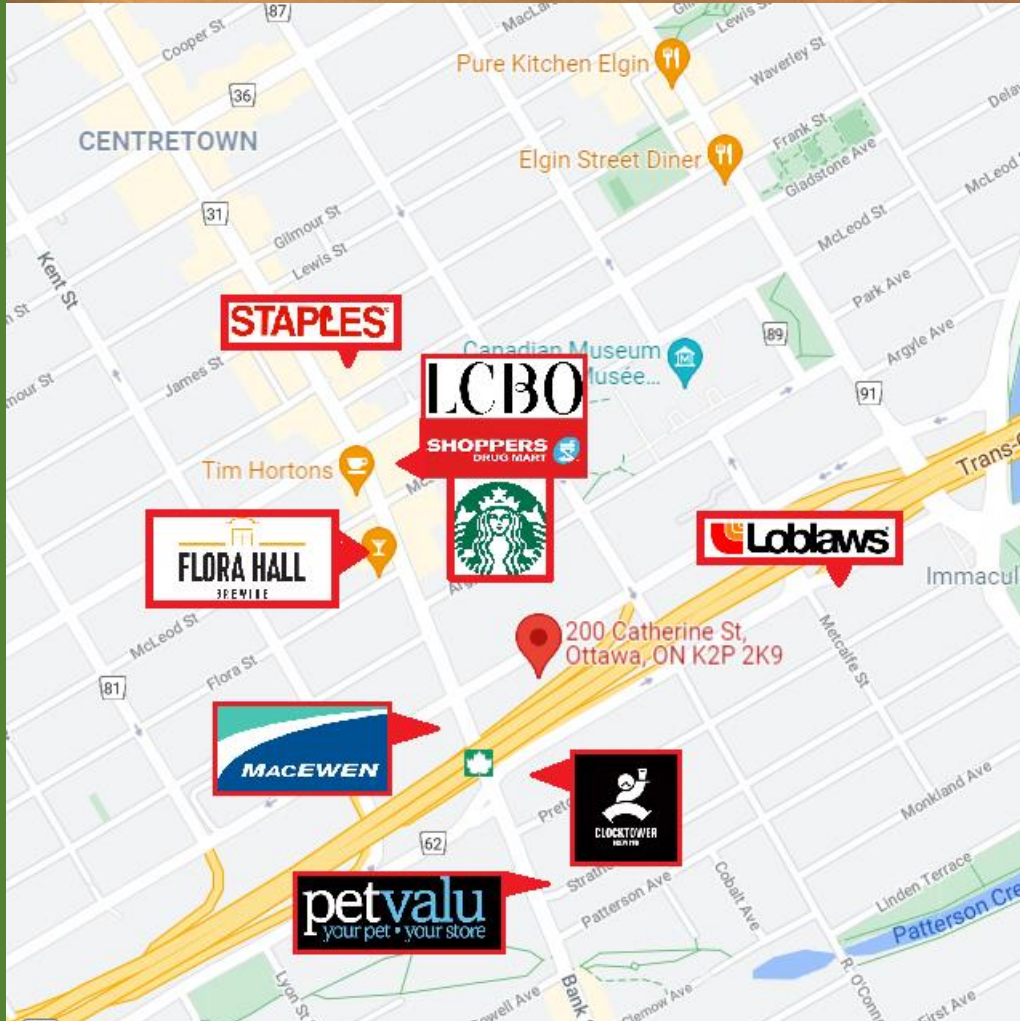
200 Catherine Street Ottawa

Highlights:

- Ground-Floor, Unit 100 :
Approx. 5,828 RSF
- Second Floor:
Approx. 1,320 RSF
- Asking Net Rent: \$15.00/RSF
With Inducement Package
- Additional Rent: \$17.00/RSF
- Plenty of Parking
- Adjacent & Easy Access to
Highway 417
- Fully Upgraded HVAC Systems
- Easy Access to Downtown Core
- Corporate Boardroom Available
On a daily basis
- Popular Amenities nearby

For all inquiries please contact :
(Brokers Protected)

Denis Shank, Broker of Record
(613) 601-1353
dshank@capworthrealty.com

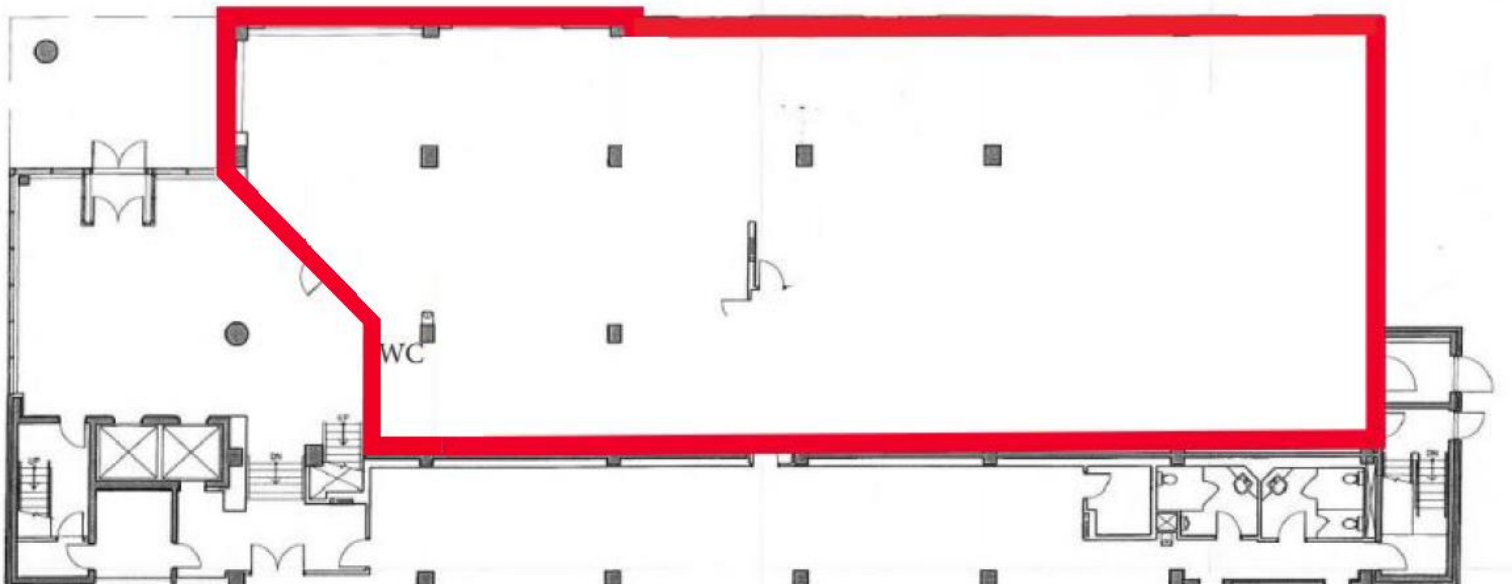


COMMON AREAS



1st Floor

Approx. 5,828 SF



2nd Floor

Approx. 1,320 SF



For all inquiries please contact **Denis Shank, Broker of Record**
(613) 601-1353 | dshank@capworthrealty.com

This document has been prepared by Capworth Commercial Realty Brokerage Corporation for the purpose of advertising and general information only. In regards to the information found within this document, Capworth Commercial Realty Brokerage Corporation makes no guarantees, representations or warranties of any kind, expressed or implied, regarding its accuracy and reliability. Any interested party should conduct a careful, independent investigation of the property to determine the suitability of the property for their specific needs.